

## HWF

Sample

Gush Mintz

Strain

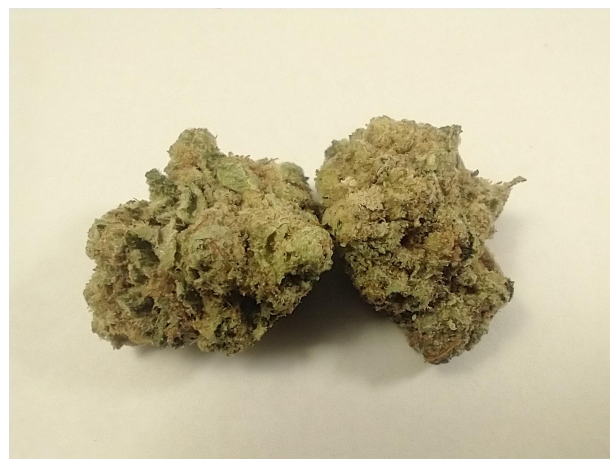
<b>0.17%</b>	<b>13.33%</b>	<b>41.88%</b>
$\Delta 9$ THC	Total CBD	Total Cannabinoids
<b>Not tested</b>	<b>Pass</b>	<b>418.8</b>
Water Activity	Moisture	mg / g Total Cannabinoids

Sample ID

**24050590303**

Matrix

Augmented Flower Biomass



Harvest/Prod Date

Report Created

5/20/2024

Results Valid Until

5/21/2025

Sample Extracted

5/19/2024 17:17:00

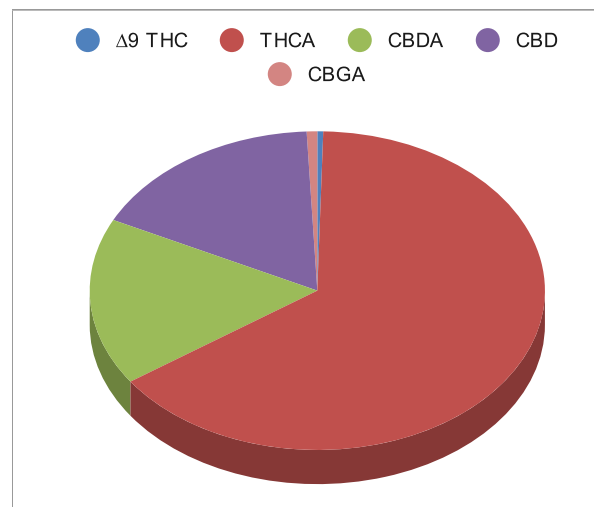
Sample Analyzed

5/20/2024 9:03

Method SOP LO001-R11

## Cannabinoids

	%Weight	mg/ gram	LOQ(% /w)
$\Delta 9$ THC	0.17	1.7	0.06
THCA	27.18	271.8	0.06
Total THC (THCA*0.877)+9THC	24.02	240.2	0.06
CBDA	7.11	71.1	0.06
CBD	7.09	70.9	0.06
CBN	<LOQ	<LOQ)	0.06
$\Delta 8$ THC	<LOQ	<LOQ)	0.06
CBC	<LOQ	<LOQ)	0.06
CBGA	0.31	3.1	0.06
CBG	<LOQ	<LOQ)	0.06
CBDV	<LOQ	<LOQ)	0.06
CBDVA	<LOQ	<LOQ)	0.06
THCVA	<LOQ	<LOQ)	0.06
CBDQ	<LOQ	<LOQ)	0.06
HHC	<LOQ	<LOQ)	0.09




Total THC and Total CBD are calculated values per OAR 333-064-0100. Cannabinoid values for plant matter samples are reported on a dry weight basis. Water activity action level is 0.65Aw. LOQ= Limit of Quantitation. NR=Not Reported.

[Rogue Research Lab LLC](#)

[Rogue River, OR 97537](#) Tel. [541-582-1962](#)

[rogueresearchlab.com](http://rogueresearchlab.com)

  
 Craig Berry - Lab Director  
 5/20/24